

### Building Lighting General Rules

#### Luminaire Setback from Building Facade:

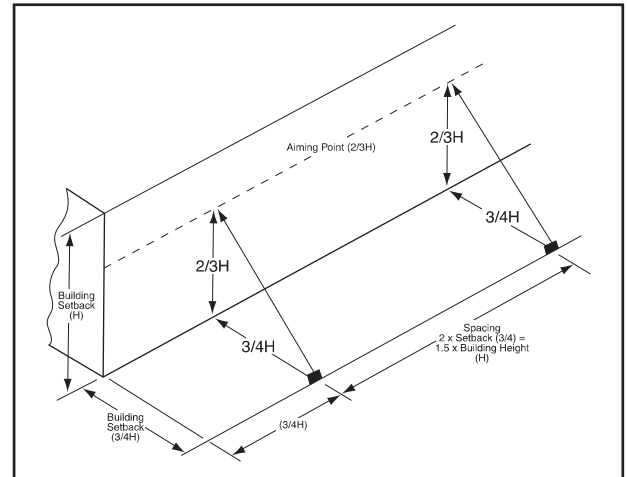
3/4 the height of the building (or vertical distance). Closer will reduce uniformity, farther away will reduce lighting efficiency.

#### Luminaire Spacing:

For uniform lighting the spacing should not exceed twice the setback.

#### Ground Mounted Aiming:

The aiming point should be at least 2/3 up the building height. If the setback is reduced the aiming point must go higher.



### NEMA

#### NEMA Plugs and Receptacles

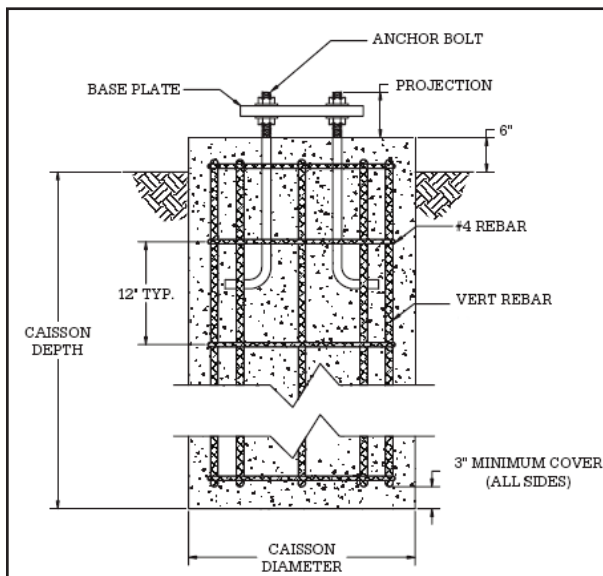
| ATLAS P/N | DESCRIPTION             | NEMA NUMBER |
|-----------|-------------------------|-------------|
| 290-007   | 125V Locking Plug 15A   | L515P       |
| 290-008   | 250V Locking Plug 15A   | L615P       |
| 290-009   | 277V Locking Plug 15A   | L715P       |
| 290-012   | 480V Locking Plug 20A   | L820P       |
| 290-013   | 250V Locking Recpt. 15A | L615R       |
| 290-014   | 277V Locking Recpt. 15A | L715R       |
| 290-015   | 125V Locking Recpt. 15A | L515R       |
| 290-016   | 480V Locking Recpt. 20A | L820R       |

#### NEMA Classification Chart

| BEAM SPREAD DEGREE | NEMA TYPE DESIGNATION |
|--------------------|-----------------------|
| 10 to 18°          | 1                     |
| 18 to 29°          | 2                     |
| 29 to 46°          | 3                     |
| 46 to 70°          | 4                     |
| 70 to 100°         | 5                     |
| 100 to 130°        | 6                     |
| 130° and over      | 7                     |

### Mounting Base Guidelines

#### Anchor Base



#### Embedded

