

Building Lighting General Rules

Luminaire Setback from Building Facade:

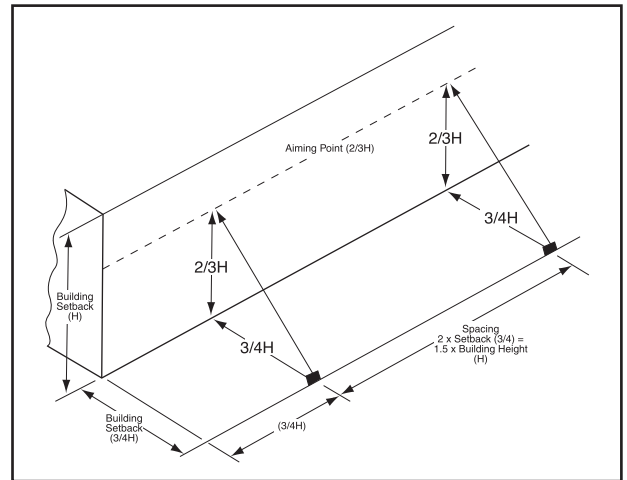
3/4 the height of the building (or vertical distance). Closer will reduce uniformity, farther away will reduce lighting efficiency.

Luminaire Spacing:

For uniform lighting the spacing should not exceed twice the setback.

Ground Mounted Aiming:

The aiming point should be at least 2/3 up the building height. If the setback is reduced the aiming point must go higher.



NEMA

NEMA Plugs and Receptacles

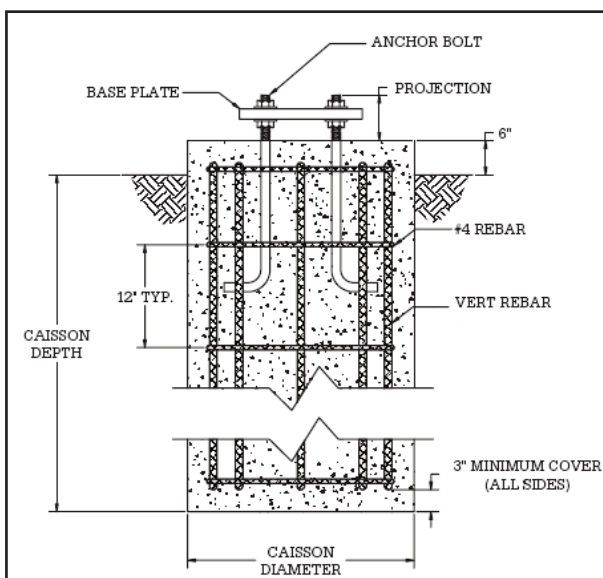
ATLAS P/N	DESCRIPTION	NEMA NUMBER
290-007	125V Locking Plug 15A	L515P
290-008	250V Locking Plug 15A	L615P
290-009	277V Locking Plug 15A	L715P
290-012	480V Locking Plug 20A	L820P
290-013	250V Locking Recpt. 15A	L615R
290-014	277V Locking Recpt. 15A	L715R
290-015	125V Locking Recpt. 15A	L515R
290-016	480V Locking Recpt. 20A	L820R

NEMA Classification Chart

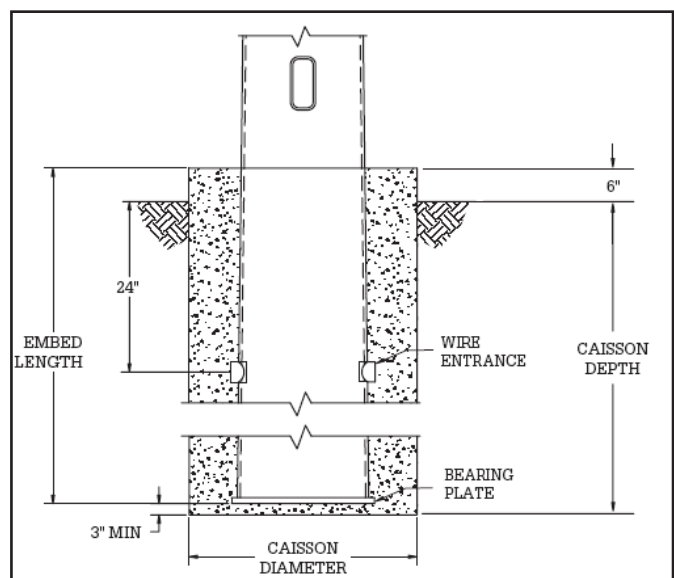
BEAM SPREAD DEGREE	NEMA TYPE DESIGNATION
10 to 18°	1
18 to 29°	2
29 to 46°	3
46 to 70°	4
70 to 100°	5
100 to 130°	6
130° and over	7

Mounting Base Guidelines

Anchor Base



Embedded



Additional information available upon request.