



Square Straight Steel Pole

SSS

PROJECT INFORMATION

JOB NAME	
FIXTURE TYPE	Square Straight Steel Pole
CATALOG NUMBER	
APPROVED BY	

SPECIFICATIONS

Pole Shaft:

Straight poles are 4", 5", or 6" square. Pole shaft is electro-welded ASTM-A595 Grade A steel tubing with a minimum yield strength of 55,000 psi. On Tenon Mount steel poles, tenon is 2-3/8" O.D. high-strength pipe. Tenon is 4-3/4" in length..

Hand-Hole:

Standard hand-hole location is 12" above pole base. Hand-hole size is 4" x 6" and reinforced.

Ground Lug:

Ground lug is standard.

Duplex Receptacle:

Weatherproof duplex receptacle is optional.

Anchor Bolts:

Poles are furnished with anchor bolts featuring zinc-plated double nuts and washers. Galvanized anchor bolts are optional. Anchor bolts conform to ASTM F 1554-07a Grade 55 with a minimum yield strength of 55,000 psi.

Base:

ASTM-A36 hot-rolled steel plate with a minimum yield strength of 36,000 psi. Two-piece square base cover is optional.

Ground Fault Circuit Interrupter:

Self-testing ground fault circuit interrupter is optional

Finishes:

Baked-on polyester-powder finishing process which electrostatically applies and fuses a polyester powder to the pole. Provides a smooth and uniform finish to withstand extreme weather changes without cracking or peeling, and features a five-year limited warranty.

Pole Vibration Damper:

A pole vibration damper is recommended in open terrain areas of the country where low steady state winds are common. Non-tapered poles and lightly loaded poles are more susceptible to destructive vibration if a damper is not installed.

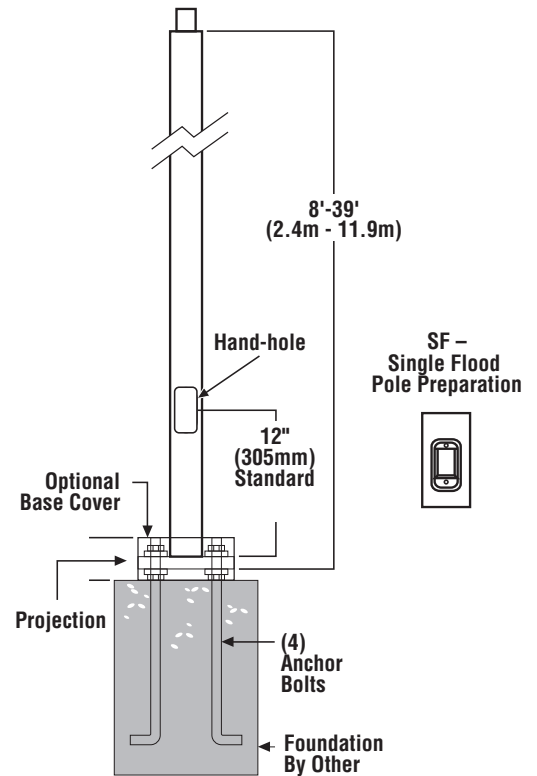
Listings:

UL Listed
BAA/TAA Compliant

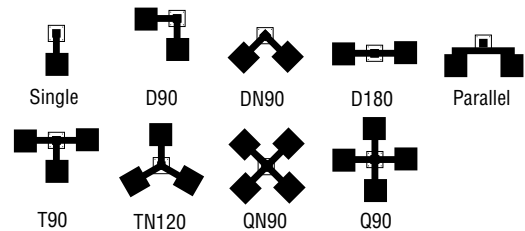


DIMENSIONS

N = 2.375" O.D. x 4.75" Tenon



FIXTURE CONFIGURATIONS



Atlas Lighting Products, Inc.

PO Box 2348 | Burlington, NC 27216
800-849-8485 | fax: 1-855-847-2794 | www.atlasled.com

The majority of Atlas Lighting Products are assembled in USA facilities by an American Workforce utilizing both Domestic and Foreign components. Meets Buy American requirements within the ARRA.



Square Straight Steel Pole

SSS

ORDERING INFORMATION

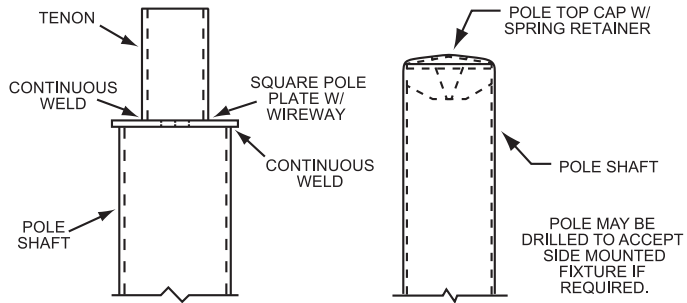
S	S	S	20	4	11	T		BZ		
SHAPE	SHAFT	STRUCTURE	HEIGHT (FT)	DIAMETER/ WIDTH (IN)	GAUGE	TENON DETAIL	BASE DETAIL	COLOR	DROP SHIP	DRILL PATTERN
S = Square	S = Straight	S = Steel	12 = 12 ft 14 = 14 ft 15 = 15 ft 16 = 16 ft 18 = 18 ft 20 = 20 ft 25 = 25 ft 30 = 30 ft 35 = 35 ft 39 = 39 ft	4 = 4 in 5 = 5 in 6 = 6 in	11 = 11 Ga 07 = 7 Ga	T = Welded Blank = None	Blank = Anchor	BZ = Bronze WH = White SL = Annodized Silver BK = Black	DSLB = Drop Ship (Bolts ship separately) QSLB = Quick Ship* (Bolts ship separately) *12, 15, 20, 25 ft mnt. ht.; 4" dia.; 11 ga.; drilled 4@90° only	1 = 1 2 = 2 @ 90 3 = 2 @ 180 4 = 3 @ 90 5 = 4 @ 90 6 = Drop Mount

ORDERING INFORMATION

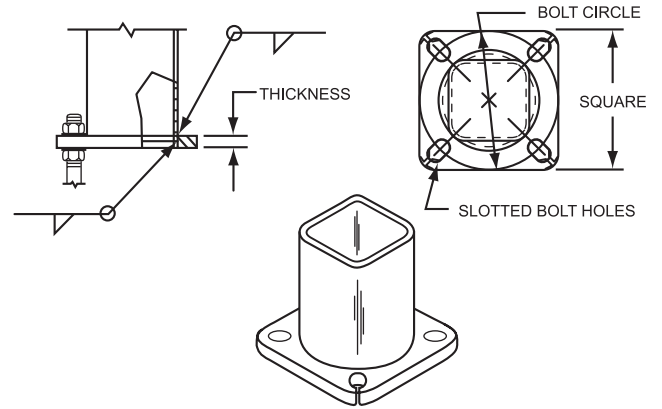
MOUNTING HEIGHT LENGTH (FT)	CATALOG NUMBER	SHAFT			POLE BASE			MAXIMUM LOADING								
		BASE O.D. (IN)	WALL THK. (GA)	GROSS WEIGHT (LBS)	BOLT CIRCLE RANGE	PLATE WIDTH (IN)	PLATE THICK (IN)	110 MPH	115 MPH	120 MPH	130 MPH	140 MPH	150 MPH	160 MPH	170 MPH	180 MPH
								EPA (FT²)	EPA (FT²)	EPA (FT²)	EPA (FT²)	EPA (FT²)	EPA (FT²)	EPA (FT²)	EPA (FT²)	EPA (FT²)
12	SSS12411BZ	4	11	90	8" - 11"	10.125	0.75	13.9	12.5	11.3	9.2	7.6	6.3	5.2	4.3	3.6
14	SSS14411BZ	4	11	105	8" - 11"	10.125	0.75	10.7	9.5	8.5	6.8	5.4	4.4	3.5	2.7	2.1
15	SSS15411BZ	4	11	113	8" - 11"	10.125	0.75	8.2	7.2	6.4	4.9	3.8	2.9	2.1	1.5	1.0
16	SSS16411BZ	4	11	120	8" - 11"	10.125	0.75	8.2	7.2	6.4	4.9	3.8	2.9	2.1	1.5	1.0
18	SSS18411BZ	4	11	135	8" - 11"	10.125	0.75	6.3	5.4	4.7	3.4	2.4	1.6	1	0.4	n/a
20	SSS20411BZ	4	11	150	8" - 11"	10.125	0.75	4.6	3.9	3.2	2.1	1.2	0.6	n/a	n/a	n/a
20	SSS20407BZ	4	7	200	8" - 11"	10.125	0.75	9.6	8.4	7.4	5.7	4.3	3.2	2.3	1.6	0.9
20	SSS20511BZ	5	11	180	9" - 11"	10.125	0.75	8.5	7.3	6.3	4.6	3.2	2.1	1.2	0.5	n/a
20	SSS20507BZ	5	7	250	9" - 11"	10.125	1.0	21.6	19.3	17.3	14	11.3	9.2	7.4	6	4.8
25	SSS25411BZ	4	11	188	8" - 11"	10.125	0.75	4.6	3.7	3	1.7	0.7	n/a	n/a	n/a	n/a
25	SSS25407BZ	4	7	250	8" - 11"	10.125	0.75	4.6	3.7	3	1.7	0.7	n/a	n/a	n/a	n/a
25	SSS25511BZ	5	11	225	9" - 11"	10.125	0.75	6.8	5.7	4.6	3	1.6	0.6	n/a	n/a	n/a
25	SSS25507BZ	5	7	313	9" - 11"	10.125	1.0	14.9	13.1	11.4	8.8	6.6	4.9	3.5	2.3	1.3
30	SSS30407BZ	4	7	225	8" - 11"	10.125	0.75	2.2	1.4	0.8	n/a	n/a	n/a	n/a	n/a	n/a
30	SSS30507BZ	5	7	375	9" - 11"	10.125	1.0	10.3	8.9	7.5	5.2	3.4	2	0.8	n/a	n/a
30	SSS30607BZ	6	7	462	12"	12	1.125	10.4	8.8	7.3	4.8	2.9	1.3	n/a	n/a	n/a
35	SSS35607BZ	6	7	539	12"	12	1.125	5.5	4.2	2.9	0.9	n/a	n/a	n/a	n/a	n/a
39	SSS39607BZ	6	7	539	12"	12	1.125	2.3	1.0	n/a	n/a	n/a	n/a	n/a	n/a	n/a

Actual performance data can vary depending on operating conditions. Specifications are subject to change without notice.

POLE TOP DETAILS

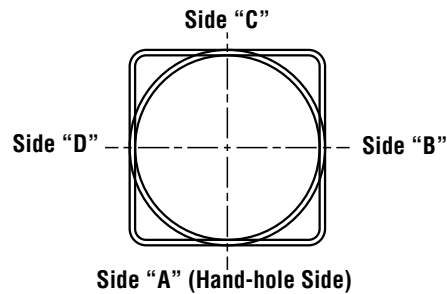


POLE BASE DETAILS



DRILLING LOCATIONS

Sides	A	B	C	D
Hand-hole	X			
Single	X			
D180		X		X
D90	X			X
DN90 ¹				
T90	X	X		X
TN120 ²				
Q90	X	X	X	X
QN90 ³				
Single FBO	X			
Double FBO		X		X



NOTES:

- 1 - Two locations will be 45° to the left and right of Side A.
- 2 - Other two locations will be 120° to the left and right of Side A.
- 3 - Two locations will be 45° to the left and right of Side A and two locations will be 135° to the left and right of Side A.

Consult factory for custom variations. Standard SF and DF pole preparations are located 3/4 of the height of the pole from the base, except on 20' poles. Maximum height for SF and DF pole preparations on 20' poles is 13' from the base.

Actual performance data can vary depending on operating conditions. Specifications are subject to change without notice.