



Wet Location

2' | 4' | 8' Narrow Body

PROJECT INFORMATION

JOB NAME	
FIXTURE TYPE	Linear Wet Location
CATALOG NUMBER	
APPROVED BY	

SPECIFICATIONS

Construction:

The 1-piece housing is made of durable composite material with 1/2" entry points on both ends. The poured gasket provides a continuous seal for the lens. Polycarbonate cam latches compress lens to housing for a tight seal. Stainless steel mounting brackets are furnished with each fixture.

Lens:

Injection molded acrylic lens with high impact additive. Lens is ribbed and frosted to eliminate glare.

ILWS - Selectable Lumens:

Atlas selectable wet location are quick and easy to select and set up. Selectable lumens: 4' = 4000 (27W), 6000 (41W), 8000 (56W)
8' = 7000 (45W), 10000 (68W), 13000 (95W)
8' = 10000 (72W), 15000 (108W), 20000 (150W)

Electrical:

AC Input: 120/208/240/277V 347/480V
Constant current, Class 2 120-277 VAC, 47-63Hz
High Efficiency – min. 85%
Off-State Power: 0 Watts
0-10 V Dimming
Temperatures: Min Start: -40°C Max: 40°C

LEDs:

Atlas LEDs provide higher lumen output, greater energy efficiency and more reliable fixture performance.
200,000+ hrs.¹ lifespan
ILW series fixtures operate at 4000K, 4500K and 5000K CCT.

Listings:

Luminaire is certified to UL/cUL Standards for Wet Locations
DesignLights Consortium qualified luminaire, eligible for rebates from DLC member utilities. See chart on next page for qualifying products.

Ratings:

NEMA4X
IP65, IP66 & IP67
NSF
1500 PSI Hose Down

Testing:

Atlas LED luminaires have been tested by an independent laboratory in accordance with IESNA LM-79 & LM-80.

Applications:

Cold storage, garages, refrigerated cases, stairwells, storage areas, fuel pump canopy, low-bay fixtures for commercial & industrial buildings.

Installation:

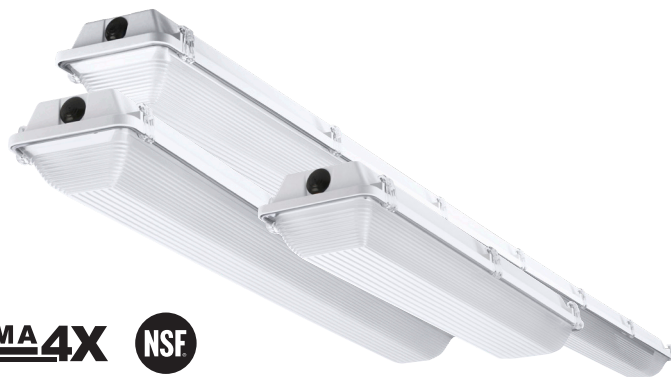
Fixture retains the same knock-out sizes and positions as previous models, reducing wiring costs. Mounting bracket allows unit to be hung with aircraft cable.

Emergency Back-up: For factory installed Emergency Back-Up add suffix EB to part number.

480 Volt: For 480V add suffix 4 to part number.

Options: L = Stainless Steel Latches, 3C = 3' Cord, 6C = 6' Cord

Warranty: Five-year limited warranty



NEMA4X

NSF

IP65 RATED

IP66 RATED

IP67 RATED

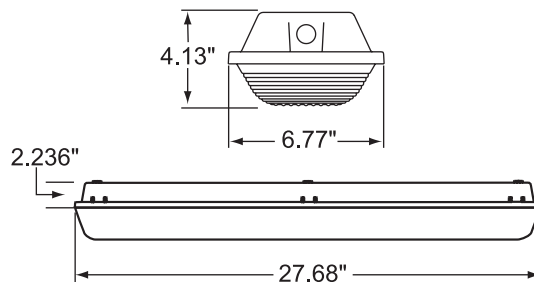


BUY AMERICAN

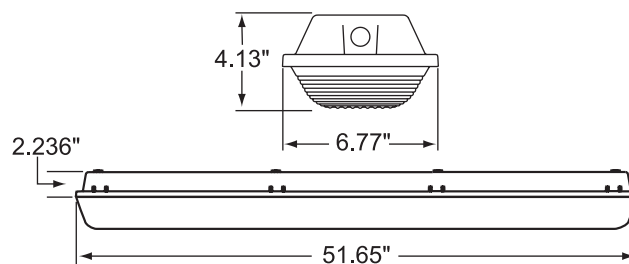


DIMENSIONS

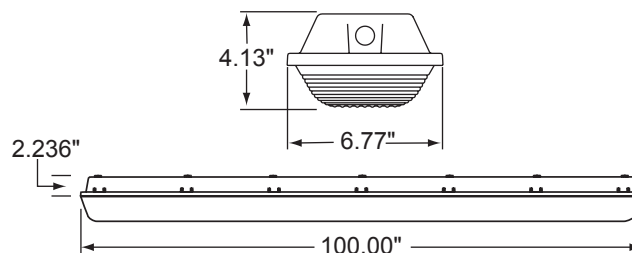
Weight: 4.4 lbs.



Weight: 9.5 lbs.



Weight: 16.9 lbs.



**Rebates and Incentives are available in many areas.
Contact an Atlas Representative for more information.**

¹LED Life Span Based Upon LM-80 Test Results



Wet Location

2' | 4' | 8' Narrow Body

ORDERING INFORMATION

ILW		48LED	4	D		
PRODUCT SERIES	SELECTABLE	WATTAGE LUMENS	FIXTURE LENGTH	BODY STYLE	COLOR TEMP.	OPTIONS
ILW = LED Linear Wet Location	Blank = Fixed	25LED = 25 System Watts ¹ 30LED = 30 System Watts ² 48LED = 48 System Watts ² 76LED = 76 System Watts ³ 98LED = 98 System Watts ³ ¹ 2 Feet only ² 4 Feet only ³ 8 Feet only	2 = 2 Feet 4 = 4 Feet 8 = 8 Feet	D = Narrow Body	Blank = 4500K 4K = 4000K 5K = 5000K	xC* = 3' Cord (No Plug) EB = Emergency Back-Up L = SS Latches 4 = 480V Driver CL = Clear Lens M = Motion (120/277) MWS = Internal Microwave Motion Sensor ⁵ PG = Parking Garage ⁴ ^{*x} = 3 for 3' Cord; 6 for 6' cord, 10 for 10' cord; and 20 for 20' cord lengths ⁴ 48 Watt only ⁵ 120-277V only
	S = Lumen Selectable	4-8L = 4,000-8,000 Lumens Selectable ² 7-13L = 7,000 - 13,000 Lumens Selectable ³ 10-20L = 10,000 - 20,000 Lumens Selectable ³ ² 4 Feet only ³ 8 Feet only				

PERFORMANCE DATA

FIXED

UNIT	FIXTURE LENGTH	CRI	4000K CCT		4500K CCT		5000K CCT		WATTAGE	REPLACES Up To
			DELIVERED LUMENS	EFFICACY (LPW)	DELIVERED LUMENS	EFFICACY (LPW)	DELIVERED LUMENS	EFFICACY (LPW)		
ILW25LED	2'	80	4,455	142	4,455	142	4,624	144	32	70W MH
ILW30LED	4'	80	4,270	144	4,270	144	4,307	143	30	2L T5 FL
ILW48LED	4'	80	7,093	149	7,047	147	7,047	147	48	4L T8 FL
ILW76LED	8'	80	11,581	154	11,506	153	11,506	153	75	4L T5 FL
ILW98LED	8'	80	14,067	150	13,976	149	13,976	149	94	4L T5 FL

SELECTABLE

UNIT	FIXTURE LENGTH	CRI	4000K CCT		4500K CCT		5000K CCT		WATTAGE	REPLACES Up To
			DELIVERED LUMENS	EFFICACY (LPW)	DELIVERED LUMENS	EFFICACY (LPW)	DELIVERED LUMENS	EFFICACY (LPW)		
4-8L	4'	80	4,027	147	4,027	147	3,998	146	27	2L T8 FL
	4'	80	5,912	145	5,912	145	5,870	144	41	2L T5 FL
	4'	80	7,889	140	7,889	140	7,833	140	56	4L T8 FL
7-13L	8'	80	6,846	154	6,824	153	6,824	153	45	4L T8 FL
	8'	80	10,302	153	10,269	152	10,269	152	68	4L T5 FL
	8'	80	13,863	146	13,819	146	13,819	146	95	4L T5 FL
10-20L	8'	80	10,221	142	10,190	142	10,159	141	72	4L T8 FL
	8'	80	15,063	140	15,017	140	14,972	139	108	4L T5 FL
	8'	80	20,222	136	20,161	134	20,100	134	150	4L T5 FL



Wet Location

2' | 4' | 8' Narrow Body

DLC PRODUCT INFORMATION

FIXED

UNIT	FIXTURE LENGTH	4000K CCT		4500K CCT		5000K CCT	
		DLC PRODUCT ID	CLASSIFICATION	DLC PRODUCT ID	CLASSIFICATION	DLC PRODUCT ID	CLASSIFICATION
ILW25LED	2'	PWC8VBGM	Standard	PB1YV2AQX	Standard	PJUQO9JZ	Standard
ILW30LED	4'	PDVTVOLD	Standard	P4G1KQ6W	Standard	PXCG9LPI	Standard
ILW48LED	4'	PCE5IQEB	Standard	P4KJAYFA	Standard	PIZFWRYF	Standard
ILW76LED	8'	PGXTWUA7P	Standard	PQ8MKM1X	Standard	PKSMFUGI	Standard
ILW98LED	8'	PLDW8P8R	Standard	PSC8SR8R	Standard	PMYN884T	Standard

SELECTABLE

UNIT	FIXTURE LENGTH	4000K CCT		4500K CCT		5000K CCT	
		DLC PRODUCT ID	CLASSIFICATION	DLC PRODUCT ID	CLASSIFICATION	DLC PRODUCT ID	CLASSIFICATION
ILWS4-8L4D	4'	S-004T8B	Standard	S-PJDA6O	Standard	S-ZCJHYO	Standard
ILWS4-8L4DCL	4'	S-QANKM3	Standard	S-GTVFP3	Standard	S-DPGEUH	Standard
ILWS7-13L8D	8'	S-JKZWUV	Premium	S-AJ9U1W	Premium	S-OHCKVW	Premium
ILWS7-13L8DCL	8'	S-47W1DM	Premium	S-PY1EGR	Premium	S-TYVSIP	Premium
ILWS10-20L8D	8'	S-F1ZVVD	Standard	S-MFQQ3M	Standard	S-K3SC97	Standard

IP RATING

	DESCRIPTION	DEFINITION
6	Dust-tight	No ingress of dust
5	Protects against water jets	Water projected from a nozzle against the enclosure from any direction shall have no harmful effect
6	Dust-tight	No ingress of dust
6	Protects against powerful water jets	Water projected in powerful jets against the enclosure from any direction shall have no harmful effect

	DESCRIPTION	DEFINITION
6	Dust-tight	No ingress of dust
7	Protects against the effects of immersion	Ingress of water in a harmful quantity shall not be possible when the enclosure is immersed in water under defined conditions of pressure & time