



## Classic Series Selectable Vandal

### PROJECT INFORMATION

JOB NAME	
FIXTURE TYPE	Selectable Vandal
CATALOG NUMBER	
APPROVED BY	

### SPECIFICATIONS

#### Construction:

Rugged traditional aluminum die cast housing provides proven environmental protection for LED modules. Traditional fixture designs provide a familiar look and standard installation requirements. Retaining this look allows the ability to upgrade fixtures gradually, while retaining the same overall fixture appearance throughout a facility. Designed for commercial and industrial applications, providing cooler operating temperatures, brighter light and longer LED life. Apertures for continuous wiring.

#### Lens:

Lens assembly is designed to provide high efficiency and to target the light where needed to satisfy outdoor lighting requirements. Positioning of the LEDs results in the light being directed to desired locations eliminating glare and offensive light.

#### Thermal Management:

The Atlas Classic Vandal is designed as a complete system to optimize LED life and light output. The Patent Pending thermal stacking heat removal technology extracts heat from within the housing moving it away from LEDs and components. The lower temperatures result in long LED life (200,000+ hrs<sup>1</sup>) and component life and also allows for higher light output.

#### Listings:

Luminaire is certified to UL/cUL Standards for Wet Locations. DesignLights Consortium qualified luminaire, eligible for rebates from DLC member utilities. *See chart on last page for qualifying products.*

IP66 Rated

**AC Input:** 120/208/240/277V | 347/480V<sup>2</sup>

#### Driver:

Constant current, Class 2, 120-277 VAC, 50-60 Hz  
High Efficiency – min. 88%  
Off-State Power: 0 Watts  
0-10 V Dimming

#### Selectable Lumens and CCT:

Quick and easy to select and set up.

Selectable lumens: 2,000, 3,000, 4,000 Lumens | 5,000, 7,500, 10,000 Lumens

Selectable CCTs: 4000K, 4500K and 5000K.

#### Temperatures:

Min Start: -40°C

#### Testing:

Atlas LED luminaires have been tested by an independent laboratory in accordance with IESNA LM-79 & LM-80.

**Warranty:** Five-year limited warranty

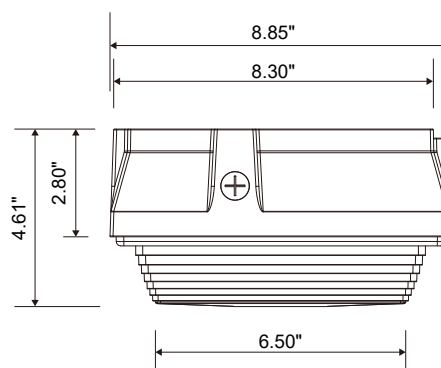


BUY AMERICAN

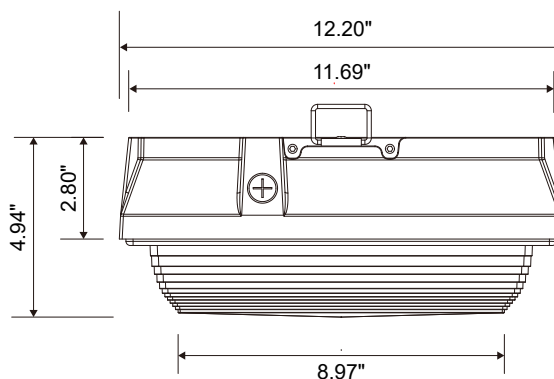


### DIMENSIONS

**VN8 - Weight:** 4.9 lbs.



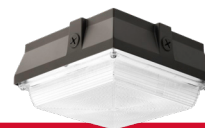
**VN12 - Weight:** 8.8 lbs.



<sup>1</sup>LED Life Span Based Upon LM-70 Test Results | <sup>2</sup>VN12S only



## Classic Series Vandal



### ORDERING INFORMATION

VN8	S	2-4L	45K			
PRODUCT SERIES	SELECTABLE	WATTAGE	COLOR TEMP.	VOLTAGE	FIXTURE COLOR	OPTIONS
VN8 = 8" Vandal Series VN12 = 12" Vandal Series	S = Selectable	2-4L = 2,000 - 4,000 Lumens Selectable 5-11L = 5,000 - 11,000 Lumens Selectable	Blank = Selectable 4000K, 4500K, 5000K	Blank = 120-277 4 = 480V <sup>1</sup> <sup>1</sup> VN12 only	Blank = Bronze WT = White* BK = Black* SL = Silver* <i>*optional with adder</i>	SP = Surge Protection M = Motion MWS = Internal Microwave Motion Sensor <sup>1</sup> EB = Emergency Battery Back-Up <sup>2</sup>  <sup>1</sup> 120-277V Only <sup>2</sup> Only available on VN12S, 120-277V

### PERFORMANCE DATA

UNIT	CRI	4000K CCT		4500K CCT		5000K CCT		WATTAGE
		DELIVERED LUMENS	EFFICACY (LPW)	DELIVERED LUMENS	EFFICACY (LPW)	DELIVERED LUMENS	EFFICACY (LPW)	
VN8S2-4L	80	2,247	122	2,382	129	2,322	126	18
		3,307	122	3,505	129	3,418	126	27
		4,309	117	4,567	129	4,453	121	36
VN12S5-11L	80	5,507	137	5,746	143	5,526	137	40
		8,123	135	8,475	141	8,150	136	60
		10,650	130	11,112	141	10,686	131	82

### DLC PRODUCT INFORMATION

UNIT	DLC PRODUCT ID	CLASSIFICATION
VN8S2-4L	S-7JB3ZD	Premium
VN12S5-11L	S-2G87CI	Premium